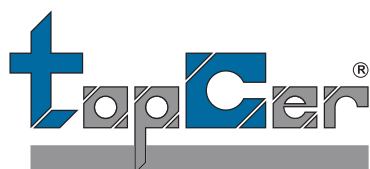


THE CHOICE OF ARCHITECTS



CMine - Ghent, Belgium



Indústria de Cerâmica, S.A.

WWW.TOPCER.COM

TopCer

Sustainability & Environmental Statement

TopCer has long been committed to environmentally friendly operations in the design, manufacturing, and distribution of unglazed porcelain wall and floor tiles. TopCer ensures sustainability along production processes in accordance with standards and legal requirements, while ensuring we meet clients' needs and expectations.

Environmental awareness is present throughout the entire lifecycle of TopCer products (please see our [Environmental Product Declaration](#) in our website) namely:

- Adoption of best practices in environmental management for continuous improvement and pollution prevention, thereby reducing environmental impact;
- Assuring that all raw materials used in the production process come from environmental conscious suppliers, preferably from suppliers with environmental certification;
- Committing ourselves to reducing energy consumption in all stages of our product life cycle;
- Ensuring that the sludge from water waste treatment and crushed porcelain pieces generated in our manufacturing process are re-used by a licensed waste operator in the production of structural ceramics as these residues, due to the technical characteristics of unglazed porcelain tiles, cannot be reintegrated into the production process;
- We encourage the recycling of various types of waste in the main production areas where they are produced, by disposal bins with appropriate labeling, in order to support and perform the separation of several types of plastic, cardboard and paper, paper and plastic cups, wood, etc. Assuring that the recycling of each type of waste occurs through licensed organizations specialized in respective fields.

TopCer Environmental Management System is certified by ISO 14001, and TopCer Quality Management System by ISO 9001.



TopCer 2 warehouses, are covered by 1036 photovoltaic solar panels

TopCer

TopCer is an established worldwide brand, founded in 1991 by Mr. Carlos Miguel, a renowned figure in the world of ceramics. Known for the quality of its unique and innovative products, TopCer specializes in the manufacturing of unglazed porcelain tiles in small modular sizes — 10x10, 7.5x15, 15x15, and 10x30 — available in various textures and shapes.

These are complemented by a considerable range of matching trim pieces (49 in total), all offered in 30 colors.

Through continuous research into traditional sizes, components, and patterns used over the past two centuries, TopCer developed the Victorian Designs and Borders and Contemporaneous Series collections.

These collections combine traditional and modern innovative designs, mounted on back-mesh in modular sheets.

This has led to the development of specific niche markets in certain regions, making them ideal for use in palaces, museums,

hotels, restaurants, pubs, cruise ships, private homes, and the restoration of historic floors.

The TopCer range is one of the most versatile product lines available.

Manufactured from through-body unglazed porcelain of exceptional quality, it features a wide variety of colors and shapes, making it a designer's playground.

Supported by an extensive selection of trim pieces and technical anti-slip finishes, the TopCer range is suitable for numerous applications, offering both aesthetic appeal and superior functionality.

TopCer tiles are highly valued for their exceptional durability, featuring high breaking strength, frost resistance, wear resistance, and non-slip properties.

As a result, they are widely used in a variety of demanding environments, ensuring both longevity and outstanding performance.

Merit, Excellence and Leadership
award winner

PME líder since 2008



PME excelência since 2011



Colour Range



Colour's accuracy is limited by the print of this catalogue.

Stock Availability

[standard thickness 8 – 8.5 mm]

SERIES	COLOURS	SIZES									
		RC 10x10	DD 10x10	RT 10x10	SS 10x10	10x10	10x10	10x10	10x10	10x30	
Series 1	01	Beige	●	●	●	●	●	●	●	●	●
	02	Speckled Grey	●	●	●	●	●	○	○	○	○
	03	Yellow	●	●	●	●	●	●	●	●	●
	05	Old Rose	●	●	●	●	●	●	●	●	●
	06	Light Grey (Brown.)	●	●	●	●	●	●	●	●	●
	08	Granite Rose	●	●	●	●	●	○	○	○	○
	09	Granite Grey	●	●	●	●	●	○	○	○	○
	17	Speckled Brown	●	●	●	●	●	○	○	●	●
	Series 2	10	Granite Burgundy	●	●	●	●	●	○	○	○
24		Speckled Black/White	●	●	●	●	●	○	○	●	●
Series 3	07	Light Grey (Blue)	●	●	●	●	●	●	●	●	●
	12	Granite Blue	●	●	●	●	●	○	○	○	○
	14	Black	●	●	●	●	●	●	●	●	●
	19	Pink	●	●	●	●	●	●	●	●	●
	20	Brick-red	●	●	●	●	●	●	●	●	●
	21	Ochre Yellow	●	●	●	●	●	●	●	●	●
	22	Granite Green	●	●	●	●	●	○	○	○	○
	28	Light Green	●	●	●	●	●	●	●	●	●
	30	Dark Grey	●	●	●	●	●	●	●	●	●
Series 4	04	Caramel	●	●	●	●	●	●	●	●	●
	13	Turquoise	●	●	●	●	●	●	●	●	●
	15	Medium Grey	●	●	●	●	●	●	●	●	●
	16	White	●	●	●	●	●	●	●	●	●
	26	Speckled White	●	●	●	●	●	○	○	○	●
	27	Light Blue	●	●	●	●	●	●	●	●	●
	29	Coffee Brown	●	●	●	●	●	●	●	●	●
Series 5	11	Blue (Cobalt)	●	●	●	●	●	●	●	●	●
	18	Dark Green	●	●	●	●	●	●	●	●	●
	23	Speckled Yellow	●	●	●	●	●	○	○	○	○
	25	Yellow (Lemon)	●	●	●	●	●	●	○	○	○

Colours marked in (●) are part of our standard stock and available for order in quantities of 1 carton or more.
Colours marked in (○) are not regularly stocked in the listed sizes, textures, or thicknesses but can be produced on request. A minimum production order of 2500 m² applies. Clients must also purchase any surplus material produced (in first quality), up to a maximum of 10% of the original order. For small quantities or special sizes/colours not listed as standard, please contact us. We may be able to supply materials from previous production runs.

Sizes & Shapes Smooth Textures

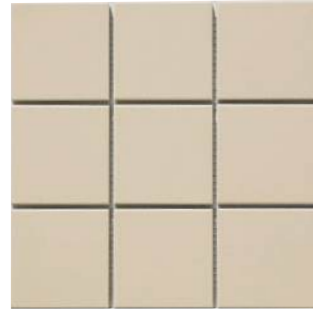
M(cm) / W(mm)

10 x 10 Loose



96x96x8

10 x 10 on mesh
Sheet 30x30 (4 mm joint)



296x296x8

10 x 10 Octagon



96x96x8

10 x 10 Octagon with Dot 3x3
Sheet 30x30 (4 mm joint)



296x296x8

10 x 10 Hexagon



100x115x8

7.5 x 15



71x146x8

15 x 15



146x146x8

10 x 30



96x296x8

Sizes

Textured Surfaces

M(cm) / W(mm)

RT

10 x 10



96x96x8.5

15 x 15



146x146x8.5

SS

10 x 10



96x96x8.5

15 x 15



146x146x8.5

RC

10 x 10



96x96x8.5

15 x 15



146x146x8.5

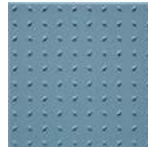
DD

10 x 10



96x96x8.5

15 x 15

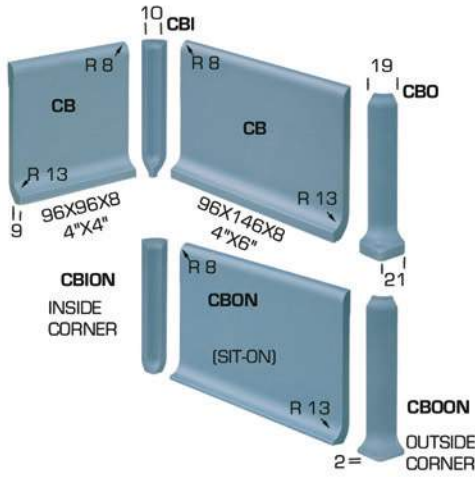


146x146x8.5

Trim Pieces

(mm)

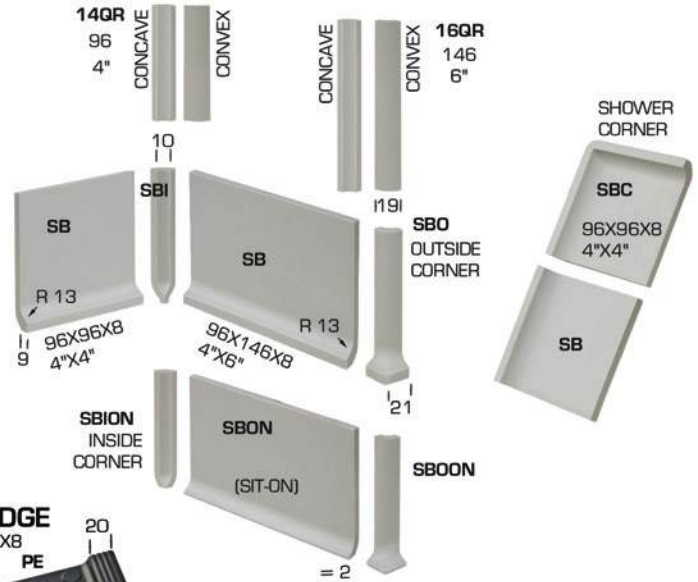
COVE BASE



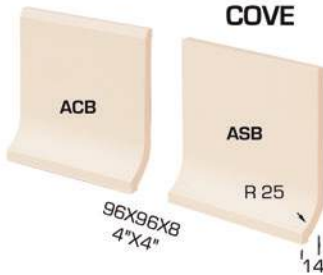
SANITARY COVE BASE

WALL ANGLES (QUARTER ROUND)

(reversible)



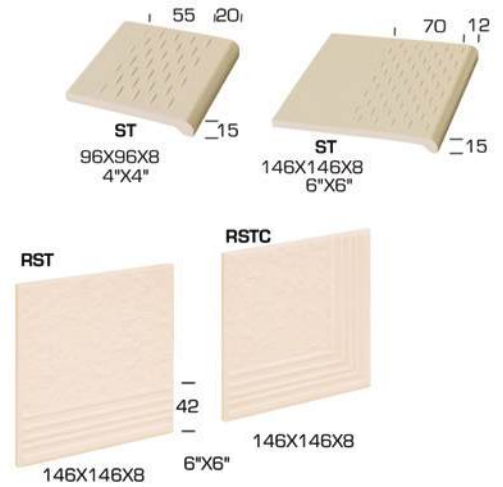
AUSTRALIAN COVE



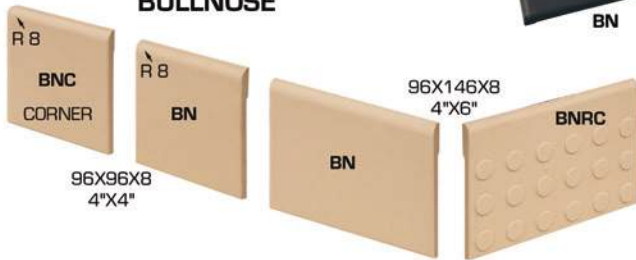
POOL EDGE



STAIR TREAD

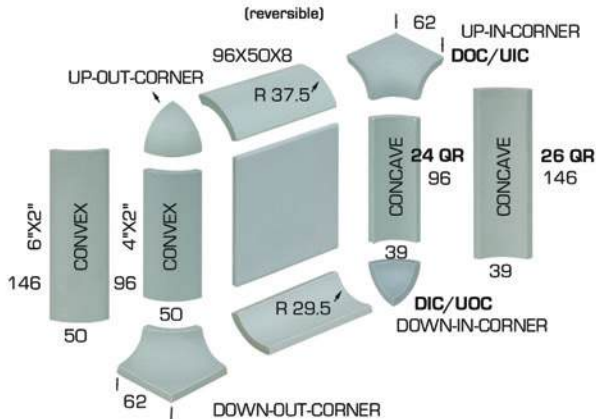


BULLNOSE

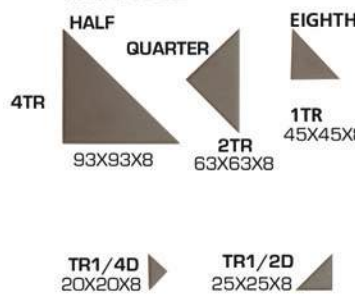


QUARTER ROUND

(reversible)



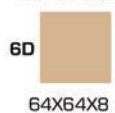
TRIANGLE



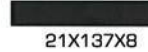
LOZENGE



SQUARE



STRIP 5STP



STRIP 6STP



DOT



NOTE: Trim Pieces are intended to be used as finishing pieces, matching only with TOPCER field tiles.

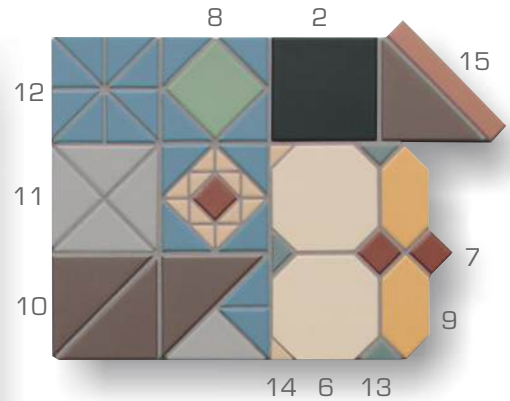
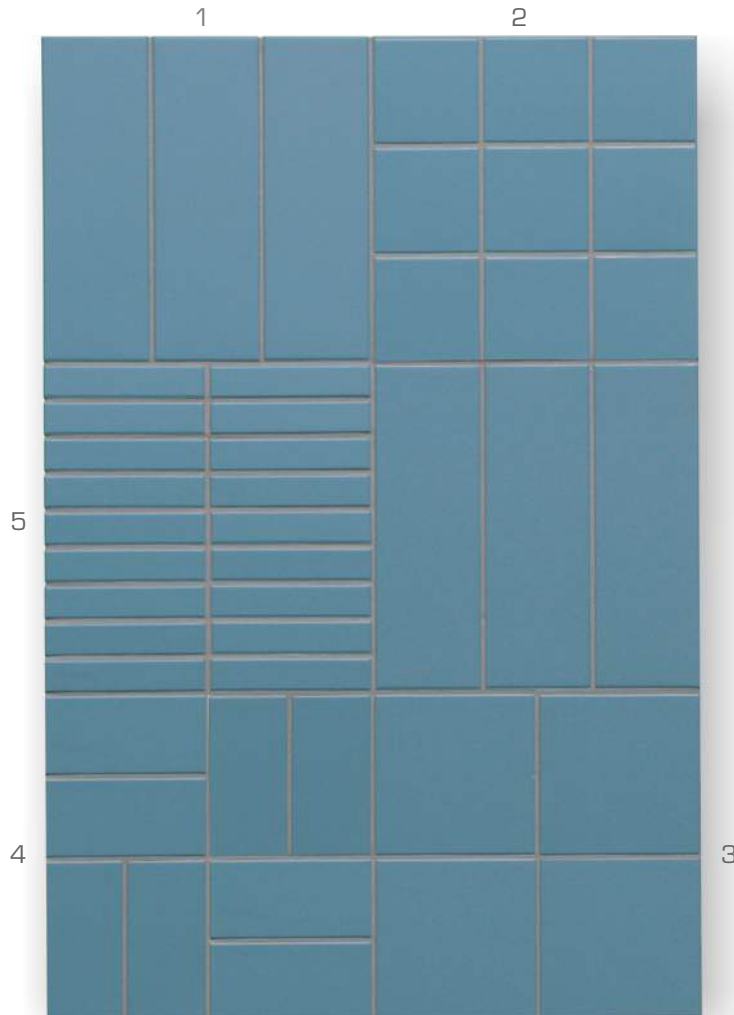
* Australian Covs, BNRC, PE and PES pieces are not stocked in all colours. Orders for colours not in stock are only accepted for minimum of 500 pieces.



• Orders for Stair Treads ST and RST size 30x30 (296x296x8,5mm), RST and RSTC size 15x15 (146x146x8mm) are only accepted after stock availability confirmation.

Modular Sizes

(4mm standard joints)



- 1 - 4"x12" – 10x30 (96x296x8mm)
- 2 - 4"x4" – 10x10 (96x96x8mm)
- 3 - 6"x6" – 15x15 (146x146x8mm)
- 4 - 3"x6" – 7,5x15 (71x146x8mm)
- 5 - 6STP – 29x146x8mm (MIAMI 30x30)
- 6 - OCT – 10x10 (96x96x8mm)

- 7 - 3D – 29x29x8mm
- 8 - 6D – 64x64x8mm
- 9 - LZ – 96x44x8mm
- 10 - 4TR – 93x93x8mm
- 11 - 2TR – 63x63x8mm
- 12 - 1TR – 45x45x8mm
- 13 - TR1/2D – 25x25x8mm
- 14 - TR1/4D – 20x20x8mm
- 15 - 5STP – 21x137x8mm



OPZ - Geel, Belgium



C-Mine - Genk, Belgium



WZC Menos - Genk, Belgium



St. Joseph Hospital - Berlin, Germany

Smooth



Telenet HQ - Mechelen, Belgium



Story Ravintola - Helsinki, Finland



Boulangerie Paul - Orly, France



Restaurant Bar, Sweden



Multipurpose Hall Wetzikon. Switzerland



Nando's Restaurant - Colchester, UK



Lido, Latvia



Fruehauf, Germany

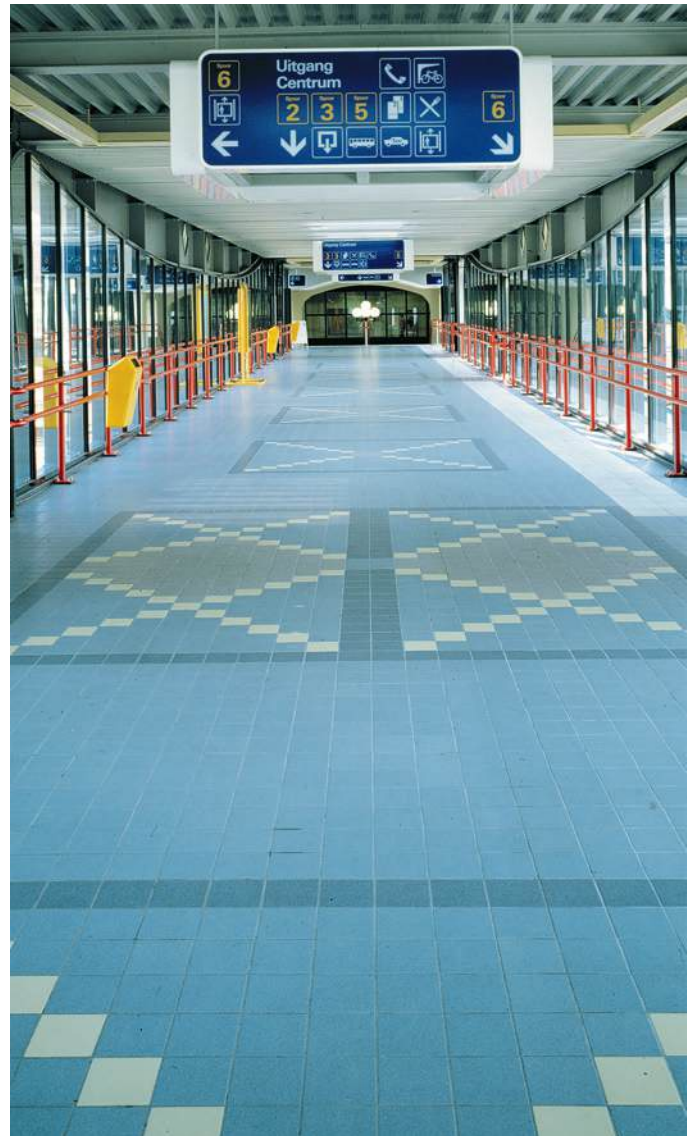
Smooth



Fire brigade premises - Lisse, the Netherlands



Cabrillo Boulevard - Santa Barbara, CA - USA



Woerden station, the Netherlands



Headquarters "Gasuni" - Groningen, the Netherlands



Youth Hostel - Kortrijk, Belgium



Private residence - Milan, Italy



Restaurant Vertigo - New York, USA



Casa da Música - Oporto, Portugal



Comprehensive school - Utrecht, the Netherlands



Gelredome Stadium - Arnhem, the Netherlands

Textured



Swimming Pool Complex - Vetelin, Finland



Swimming Pool Complex - Aulanko, Finland



Municipal Swimming Pool - Tammisaari, Finland



Kinsmead Pool, UK



Thermal Spa - Luso, Portugal



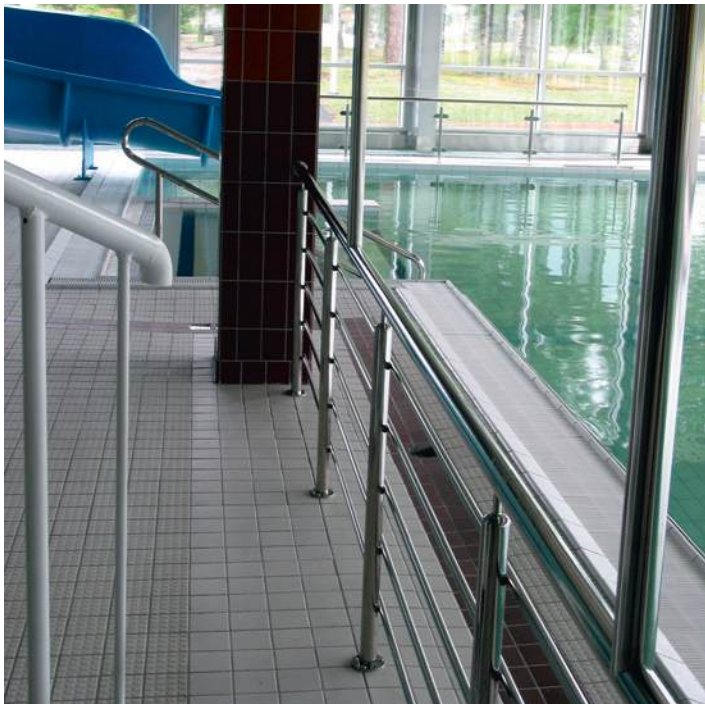
Caribia Hotel - Turku, Finland



Thermal Spa - Cabeço de Vide, Portugal



Mariebad Spa & Bad - Alands, Finland



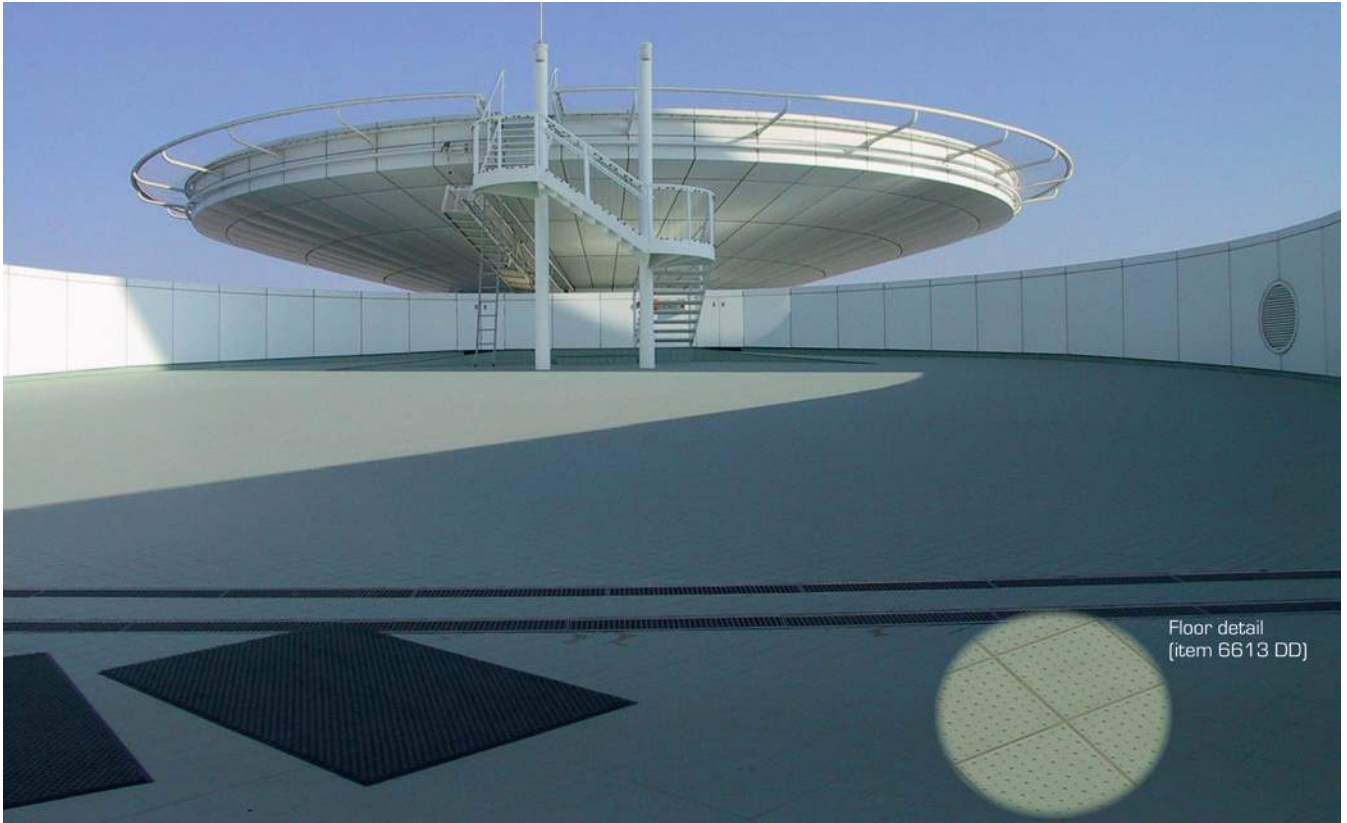
Swimming Pool Complex - Ulvila, Finland



Swimming Pool Complex - Someron, Finland



Swimming Pool Complex - Someron, Finland



Burj Al Arab Helipad - Dubai, UAE



Centro Mariano - Fátima, Portugal

Packing

THICKNESS	CARTON / BOX				PALLET						
	Sizes	Pieces	Sq.mts	Sheets 30x30	Measurements (cm)	Cartons	Sq.mts	Gross Weight (kgs)			
8 mm	10x10 4"x4"	Mesh mounted									
		SMOOTH	126	1.26	14	120x100x78 H (B)	60	75.60	1290		
		DD	"	"	"	"	"	"	1220		
		RC	"	"	"	"	"	"	1260		
		RT	"	"	"	"	"	"	1280		
		SS	"	"	"	"	"	"	1300		
		OCT with DOT	"	"	"	120x100x94 H (B)	54	68.04	1170		
		Loose									
		SMOOTH	100	1.00	-	120x80x65 H (A)	60	60	1050		
		OCT	"	"	-	"	"	"	940		
		DD	"	"	-	120x80x75 H (A)	"	"	990		
		RC	"	"	-	"	"	"	1000		
	RT	"	"	-	"	"	"	1010			
	SS	"	"	-	"	"	"	1020			
	HEXAGON	"	0.92	-	120x80x80 H (A)	54	49.68	890			
	12 mm	7.5x15 3"x6"	Loose								
SMOOTH		100	1.125	-	120x80x80 H (A)	60	67.50	1170			
15x15 6"x6"		Loose									
		SMOOTH	50	1.125	-	120x80x80 H (A)	60	67.50	1180		
		DD	"	"	-	120x80x90 H (A)	65	73.125	1270		
		RC	"	"	-	"	"	"	1290		
		RT	"	"	-	"	"	"	1290		
		SS	"	"	-	"	"	"	1340		
Loose											
SMOOTH		34	0.765	-	120x80x90 H (A)	75	57.375	1490			
DD		36	0.81	-	"	65	52.65	1360			
RC		"	"	-	"	"	"	1380			
RT	"	"	-	"	"	"	1400				
SS	"	"	-	"	"	"	1410				
8 mm	10x30 4"x12"	Loose									
	SMOOTH	34	1.02	-	120x80x75 H (A)	60	61.2	1060			
	30x30 12"x12"	Loose									
SMOOTH		11	0.99	-	120x80x75 H (A)	60	59.40	1150			
					RT	"	"	-	"	"	1090

THICKNESS	Sizes	20 FEET CONTAINER				TRUCK / CAMION		
		19 tons		21.5 tons		24 tons		
		Pallet	Sq.mts.	Pallet	Sq.mts.	Pallet	Sq.mts.	
8 mm	10x10 4"x4"	Mesh mounted						
		SMOOTH, DD, RC, RT, SS	14 (B)	1058.4	16 (B)	1209.6	18 (B)	1360.8
		Loose						
		SMOOTH	18 (A)	1080	21 (A)	1260	23 (A)	1380
		DD, RC, RT, SS	18 (A)	1080	21 (A)	1260	23 (A)	1380
	7.5x15 / 3"x6" 15x15 / 6"x6"	Loose						
		SMOOTH	16 (A)	1080	18 (A)	1215	20 (A)	1350
	15x15 6"x6"	Loose						
		DD, RC, RT, SS	14 (A)	1023.75	16 (A)	1170	18 (A)	1316.25
	10x30 4"x12"	Loose						
SMOOTH		18 (A)	1101.6	21 (A)	1285.2	22 (A)	1346.4	
30x30 12"x12"	Loose							
	SMOOTH, RT	17 (A)	1009.8	19 (A)	1128.6	21 (A)	1247.4	

Detailed packing of all TopCer products is available at www.topcer.com

- (A) EURO PALLET - EPAL 1 – size 1200x800mm (aprox 27 Kg)
 (B) EURO PALLET - EPAL 2 – size 1200x1000mm (aprox 30 Kg)



Technical Data

Unglazed porcelain tiles — ISO 13006 and EN 14411 - Annex G - Group Bla							
SIZES:	M[=N]	10x10	10x30	7.5x15	15x15	30x30	DESIGNING COMPONENTS ^{a)}
	W	96x96x8	96x296x8	71x146x8	146x146x8	296x296x8.5	
a) Including 6STP (W29x146x8), 5STP (W21x137x8), 6D (W64x64x8), 3D (W29x29x8), LZ (W96x44x52x8), TR (W93x93x8, W64x64x8, W45x45x8, W25x25x8 y W20x20x8)							
PHYSICAL PROPERTIES	TEST STANDARD	REQUIREMENTS			TOPCER VALUE		
DIMENSION AND SURFACE QUALITY:		N < 7 cm	7 cm ≤ N < 15 cm	N ≥ 15 cm			
Length and width	ISO 10545-2	± 0,5 mm	± 0,9 mm	± 0,6% / ± 2,0 mm	Conforms		
Thickness	ISO 10545-2	± 0,5 mm	± 0,5 mm	± 5,0% / ± 0,5 mm	Conforms		
Straightness of sides	ISO 10545-2	No testing	± 0,8 mm	± 0,5% / ± 1,5 mm	Conforms		
Rectangularity	ISO 10545-2	No testing	± 0,8 mm	± 0,5% / ± 2,0 mm	Conforms		
Surface flatness, [curvature and warpage]	ISO 10545-2	No testing	± 0,8 mm	± 0,5% / ± 2,0 mm	Conforms		
Surface quality	ISO 10545-2		≥ 95%		Conforms		
PRODUCT QUALITY AND DURABILITY:							
Water absorption	ISO 10545-3		≤ 0,5%		Conforms		
Breaking strength	ISO 10545-4		≥ 1300 N		≥ 1800 N		
Modulus of rupture	ISO 10545-4		≥ 35 N/mm ²		≥ 50 N/mm ²		
Impact resistance	ISO 10545-5		Declared Value		No visible defects		
Resistance to deep abrasion (unglazed tiles)	ISO 10545-6		≤ 175 mm ³		123 mm ³		
Coefficient of linear thermal expansion	ISO 10545-8		Declared Value		5,6 x 10 ⁻⁶ °C ⁻¹		
Thermal shock resistance	ISO 10545-9		No visible defects		Conforms		
Moisture expansion	ISO 10545-10		Declared Value		< 0,1 mm/m		
Frost resistance	ISO 10545-12		No visible defects		Conforms		
Resistance to chemicals	ISO 10545-13		No visible defects		Conforms		
Resistance to staining	ISO 10545-14		No permanent staining		Conforms		
SLIP RESISTANCE: (For the designing components, the slip resistance is equal or better than size 10x10 smooth)							
Areas with footwear	Dynamic Coefficient of Friction (DCOF)						
		ASTM - ANSI A 137.1-2012 (INTERTEK - CA)	0.62	10x10 / 4"x4 Plain Finish (smooth)			
			0.65	10x10 / 4"x4 Riven (RT) finish			
		AS 4586:2013 Appendix B (ATTAR - AU)	0.65	10x10 / 4"x4 Plain Finish (smooth)			
	Wet Pendulum Slip Resistance						
		AS 4586:2013 Appendix A (ATTAR - AU)	47	10x10 / 4"x4 Plain Finish (smooth)			
	VALUES:						
		Pendulum (Slider 96)	DRY	WET	SIZES / SURFACE TEXTURE		
		CEN/TS 16165 : 2016 (Annex C)	62 - 71	42 - 53	10x10; 7,5x15; 15x15; 10x30; 30x30 Plain finish (smooth)		
			65	45	10x10 Octagon with 3x3 dot Plain finish (smooth)		
	63		39	10x10 Hexagon Plain finish (smooth)			
	81 / 85		73 / 75	10x10 Round studs (RC) finish / 15x15 Round studs (RC) finish			
	83 / 85		71 / 74	10x10 Square studs (SS) finish / 15x15 Square studs (SS) finish			
	85 / 88		70 / 79	10x10 Diamond studs (DD) finish / 15x15 Diamond studs (DD) finish			
	63 / 67		53 / 55	10x10 Riven (RT) finish / 15x15 Riven (RT) finish			
	Pendulum (Slider 57)	PVT	Class	SIZES / SURFACE TEXTURE			
	UNE 41901 : 2017 EX (SPAIN)	37 / 39	2	10x10 colour 16 / 10x10 colour 28 Plain finish (smooth)			
		29 - 32	1	10x10 other colours; 10x10 Octagon; 10x10 Hexagon Plain finish (smooth)			
		26 - 35	1	7,5x15; 15x15; 10x30; 30x30 Plain finish (smooth)			
		57 / 53	3	10x10 Round studs (RC) finish / 15x15 Round studs (RC) finish			
		64 / 58	3	10x10 Square studs (SS) finish / 15x15 Square studs (SS) finish			
		51 / 56	3	10x10 Diamond studs (DD) finish / 15x15 Diamond studs (DD) finish			
		47 / 54	3	10x10 Riven (RT) finish / 15x15 Riven (RT) finish			
	Ramp Test	VALUES:					
	DIN 51130 (HS-KOBLENZ - DE)	6° ≤ R9 ≤ 10°	30x30 Plain finish (smooth)				
		10° < R10 ≤ 19°	10x10 (also Hexagon and Octagon) / 10x30 / 15x15 Plain finish (smooth)				
		19° < R11 ≤ 27°	10x10 / 15x15 Square studs (SS) and in Round studs (RC)				
			30x30 Rubber (R), 30x30 Riven (RT)				
		27° < R12 ≤ 35°	10x10 / 15x15 Riven (RT) and in Diamond studs (DD)				
Displacement volume / Expulsion space	DIN 51130/BGR 181 (HS-KOBLENZ - DE)	V5	15x15 Square studs (SS) and Riven (RT)				
		V6	10x10 Square studs (SS) and Riven (RT), 15x15 Round studs (RC)				
		V7	15x15 Diamond studs (DD)				
		V8	10x10 Round studs (RC)				
Areas with bare-footed	DIN 51097 (HS-KOBLENZ - DE) (HS-KOBLENZ - DE) (CERAM - UK) (CERAM - UK) (HS-KOBLENZ - DE)	12° ≤ A < 18°	30x30 Plain finish (smooth)				
		18° ≤ B < 24°	10x10 (also Hexagon and Octagon) / 10x30 / 15x15 Plain finish (smooth)				
			30x30 Rubber (R), 30x30 Riven (RT)				
		18° ≤ B < 24°	10x10 / 15x15 Plain finish (smooth)				
		C ≥ 24°	15x15 Round studs (RC)+Diamond studs (DD)+Riven (RT)+Square studs (SS)				
	C ≥ 24°	10x10 / 15x15 Round studs (RC)+Diamond studs (DD)+Riven (RT)+Square studs (SS)					

TopCer



Aerial view



Pressing



Firing



Lab control & testing



Selection



THE CHOICE OF ARCHITECTS



Cabrillo Boulevard, Santa Barbara, CA - USA



ISO 9001 & ISO 14001 Certified

EXPORT OFFICE:

Largo da Estação, 8 - 2º Fte - 2750-340 Cascais • Portugal
Tel. +351 214 844 788/9 - Fax +351 214 841 091
Email: LX@topcer.com

FACTORY:

Rua do Monte Grande 10, Zona Industrial de Oiã - 3770-068 Oiã • Portugal
Tel. +351 234 722 395 - Fax +351 234 722 397
Email: av@topcer.com

